

2.0 - Functional Workflow

Superseded Specifications	
Document status	DRAFT
Document owner	Garrett, Michael
Document version	v0.1
Designer	Garrett, Michael
Solution Review	Lewis, Robert , Plunkett, Shane
Classification	Public

Version History

Version	Date	Status	Description	Updated By
0.1	30 Nov 2020	DRAFT	Initial proposal	Changes performed by Garrett, Michael

Content

- [Content](#)
- [Summary](#)
- [Before Starting](#)
- [AudaNet Quoting Method](#)
- [AudaBridge Quoting Method](#)

Summary

The below workflow document outlines an example integration pathway with the AudaNet platform, depending on the quoting method which is permitted for the claim.



Please note that the workflows which are described below are indicative of a way of integrated with the AudaNet platform, but it is not the only way.

All functions available available to be accessed by the BMS are described in the linked documentation, and it is up to the BMS to determine the best integration pathway based on their own application process and need.

Before Starting

Referenced throughout the integration documentation, you will see phrases such as '**AudaNet Platform**', '**AudaNet Quote**' and '**AudaBridge Quote**'

Depending on the type of claim which is being worked on by the repairer, data may be sent to or retrieved from a specific **AudaNet Quote** or **AudaBridge Quote**.

Its important to understand that although **AudaNet** and **AudaBridge Quotes** are stored in the **AudaNet Platform**, the integration functions have different permissions based on the Quote Type.

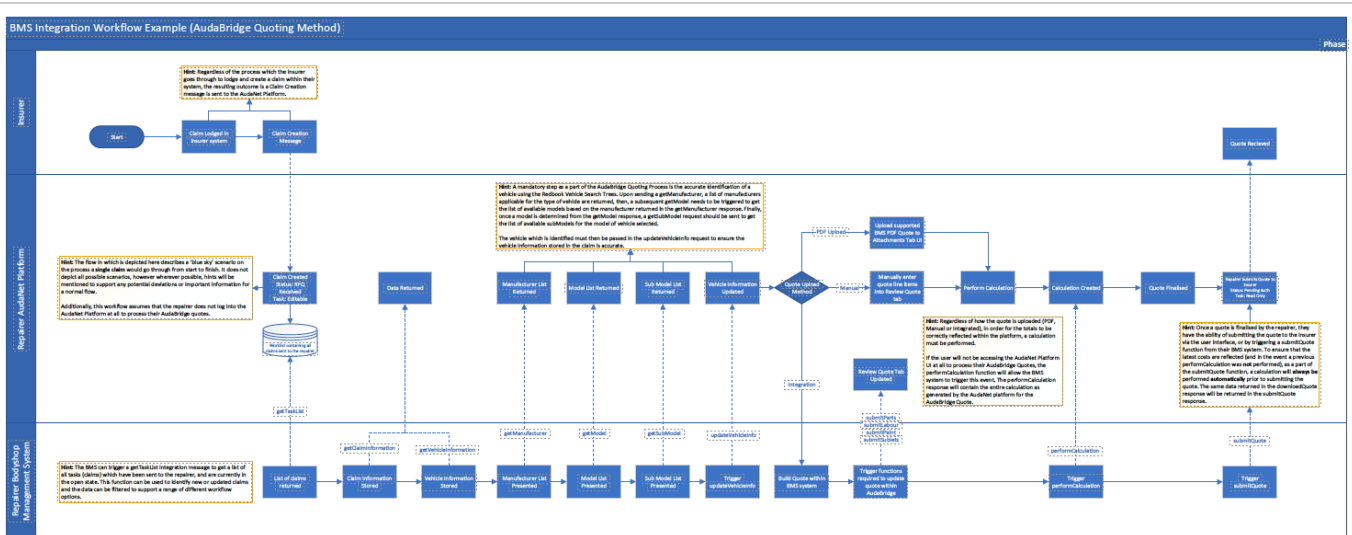
On each of the integration function pages will be the permissions for the respective requests to ensure there is a common understanding on what integration functions are allowed based on the Quote Type.

AudaNet Quoting Method

The below workflow diagram depicts a basic workflow which can be followed to retrieve an **AudaNet** claim which has been sent to a repairer, and to process it end to end until quote submission to the insurer.

Summary of functions used in the workflow diagram:

1. getTaskList - Used to retrieve the list of open claims (including new claims sent to the repairer)
2. getClaimInformation - Used to retrieve the claim related data from the claim in the AudaNet platform
3. getVehicleInformation - Used to retrieve the vehicle related data from the claim in the AudaNet platform
4. updateVehicleInfo - Used to update the vehicle information associated with a quote.
5. downloadQuote - Used to get a calculation performed in the AudaNet platform
6. submitParts - Used to submit new parts, or update existing parts within the AudaNet quote
7. submitSublets - Used to submit new sublets, or update existing sublets within the AudaNet quote
8. performCalculation - Used to trigger a calculation on an AudaNet claim (ie: can be triggered after sending updated parts & sublets to remove need for user to use the system UI to trigger a calculation)
9. submitQuote - Used to trigger the submission of the quote to the insurer from the AudaNet platform
10. updateInvoiceDetails - Used to update and submit invoices generated in the AudaNet system



AudaBridge Quoting Method

The below workflow diagram depicts a basic workflow which can be followed to retrieve an AudaBridge claim which has been sent to the repairer, and to process it end to end until quote submission to the insurer.



Many of the same functions which are used in the AudaNet Quoting Method above can be used for the AudaBridge quoting method, however there are additional functions which are available for claims which are being processed using the AudaBridge quoting method.

Note: If any of these integration functions are not implemented by the BMS, the repairer must fill in any mandatory information, and complete any other activities required to process the claim by logging into the AudaNet platform.

For example, if the submitLabour or submitPaint functions are not implemented by the BMS system, this will then require the repairer to enter this information manually from the AudaNet platform UI.

Summary of functions used in the workflow diagram

1. getTaskList - Used to retrieve the list of open claims (including new claims sent to the repairer)
2. getClaimInformation - Used to retrieve the claim related data from the claim in the AudaNet platform
3. getVehicleInformation - Used to retrieve the vehicle related data from the claim in the AudaNet platform
4. updateVehicleInfo - Used to update the vehicle information associated with a claim.
5. submitParts - Used to submit new parts, or update existing parts within the AudaBridge quote
6. submitSublets - Used to submit new sublets, or update existing sublets within the AudaBridge quote
7. submitLabour - Used to submit labour line items, or update existing labour line items within the AudaBridge quote
8. submitPaint - Used to submit paint labour or paint material line items, or update existing paint labour or paint material line items within the AudaBridge quote
9. performCalculation - Used to trigger a calculation on an AudaBridge claim
10. submitQuote - Used to trigger the submission of the quote to the insurer from the AudaNet platform
11. updateInvoiceDetails - Used to update and submit invoices generated in the AudaNet system

Workflow to be added.